

Structural Identifiability Applied to a Heat Transfer System

Javier Sanz-Bermejo, Edgar Ramirez-Laboreo, Carlos Sagues

Departamento de Informática e Ingeniería de Sistemas (DIIS)
Instituto de Investigación en Ingeniería de Aragón (I3A)
Universidad de Zaragoza, Mariano Esquillor s/n, 50018, Zaragoza, Spain.
Tel. +34-976762707, e-mail: ffsanz,ramirlab,csagues@unizar.es

Abstract

Identifiability is an essential property of a dynamical model whose study should be addressed before performing any parameter estimation procedure. In this work, we study the structural identifiability of a heat transfer system by making use of the local state isomorphism theorem for two scenarios based on the available experimental measurements.

Introduction

Reducing energy consumption is one of the main problems to be solved by human beings. Most of the energy consumed is linked to thermal processes. One of the keys to reducing energy consumption is to improve the efficiency of these systems. In this sense, building a dynamical model is a useful tool to improve the efficiency. The building of a model aimed at energy improvement is a critical aspect that depends on both the degree of detail and the information used in the construction process. The optimal solution is probably a hybrid modeling between models based on basic principles whose parameters are characterized from observations of the system. This modeling approach is called grey-box (see [1]-[2]) and requires identification procedures in order to estimate the set of partially or totally unknown parameters. Both if the parameters to be estimated have physical significance, or if the model is to be used to predict the dynamics of state variables that cannot be directly measured, it is essential to perform a preliminary identifiability analysis of the proposed parametric structure. Despite the importance of identifiability, the analysis of this property has been largely overlooked in the vast majority of works on dynamic modeling.

Dynamical Model

The presented grey-box model is based on the thermal-electrical analogy. Besides, the model adopts a lumped-parameter approach. The thermal system to be modeled is composed of two main components, each one of them modeled by the thermal capacitors C_1 and C_2 . The heating power, p , is generated directly on capacitor C_1 . The model also

includes a temperature sensor, whose dynamics is not negligible, and it is modeled by an additional capacitor, C_3 (see Fig.1). The state variables selected for the model are the temperatures of the three elements,

$$x = (T_1 \ T_2 \ T_3)^T, \quad (1)$$

and, the corresponding state-space representation is

$$\dot{x} = f_\theta(x, u) = \begin{pmatrix} -\frac{T_1}{C_1} \left(\frac{1}{R_1} + \frac{1}{R_2} \right) + \frac{T_2}{C_1 R_2} + \frac{p}{C_1} + \frac{T_{amb}}{C_1 R_1} \\ \frac{T_1}{C_2 R_2} - \frac{T_2}{C_2} \left(\frac{1}{R_2} + \frac{1}{R_3} + \frac{1}{R_4} \right) + \frac{T_3}{C_2 R_4} + \frac{T_{amb}}{C_2 R_3} \\ \frac{T_2}{C_3 R_4} - \frac{T_3}{C_3 R_4} \end{pmatrix} \quad (2)$$

Note that the dynamical model obtained, despite being linear with respect to the state variables and the input, is nonlinear with respect to the parameters.

Identifiability Analysis

Structural identifiability is a theoretical property that depends exclusively on the parameterization of the model. There are several definitions of identifiability in the literature [3]-[5]. Let us consider the previously presented model as a general input-affine dynamical model,

$$\Sigma_\theta: \begin{cases} \dot{x}(t) = \phi_\theta(x(t)) + g_\theta(x(t))u(t) \\ y(t) = h_\theta(x(t)) \\ x(t_0) = x_0(\theta) \end{cases} \quad (3)$$

The dynamical system Σ_θ and the initial state $x_0(\theta)$ define an input-output map of the form:

$$IO_{(\Sigma_\theta, x_0(\theta))} = \{u(t)\} \mapsto \{y(t)\}, t \in [t_0, t_f], \quad (4)$$

such that for each admissible input, the system returns an output. The system is said to be globally structurally identifiable (**g.s.i.**) if there is a one-to-one relationship between the set of possible values of the parameter vector and the set of possible input-output maps. That is, if it is satisfied that

$$IO_{(\Sigma_{\theta}, x_0(\theta))} = IO_{(\Sigma_{\tilde{\theta}}, x_0(\tilde{\theta}))} \Leftrightarrow \theta = \tilde{\theta}. \quad (5)$$

There are several methods proposed in the literature to assess identifiability [5]-[9]. In this paper we use the method of the local state isomorphism. This method postulates that if it is possible to find a diffeomorphism, φ , between the state spaces of two different representations of the system, then the theorem establishes that both representations correspond to the same input-output map. If, furthermore, the existence of the diffeomorphism is conditioned by an equality relation between the parametric sets, then the system is **g.s.i.** This method is applied for two cases, in one of them the state can be fully measured, while in the other only one state variable can be measured.

A. Case I. Complete state measurement

Assuming that all state variables can be measured, the resolution of the diffeomorphism gives rise to a series of relations¹ of the type $\alpha_i(\theta) = \alpha_i(\tilde{\theta})$ between the parameters. These relations are the following:

$$\alpha_1(\theta) = B_1 \quad (6)$$

$$\alpha_2(\theta) = B_1(G_1 + G_2) \quad (7)$$

$$\alpha_3(\theta) = B_1G_2 \quad (8)$$

$$\alpha_4(\theta) = B_2G_2 \quad (9)$$

$$\alpha_5(\theta) = B_2G_4 \quad (10)$$

$$\alpha_6(\theta) = B_2(G_2 + G_3 + G_4) \quad (11)$$

$$\alpha_7(\theta) = B_3G_4 \quad (12)$$

The set of equations imply that $\theta = \tilde{\theta}$. Therefore, the model is **g.s.i.** if the complete state is measured.

B. Case II. Partial state measurement

In practice it is not always possible to measure the complete state. As an example, we assume that we only have measurements of T_1 . The resolution of this diffeomorphism gives rise to a set of relations of the type $\beta_i(\theta) = \beta_i(\tilde{\theta})$, as follows:

$$\beta_1(\theta) = B_1 \quad (12)$$

$$\beta_2(\theta) = B_1(G_1 + G_2) \quad (14)$$

$$\beta_3(\theta) = B_1B_2G_2^2 \quad (15)$$

$$\beta_4(\theta) = B_2(G_2 + G_3 + G_4) \quad (16)$$

$$\beta_5(\theta) = B_2G_4 \quad (17)$$

$$\beta_6(\theta) = B_3G_4 \quad (18)$$

In this case, the set of equations does not imply $\theta = \tilde{\theta}$. Thus, the model is not **g.s.i.** measuring only T_1 .

Further Results and Discussion

A. Case I. Complete state measurement

In the case of measuring the complete state, the identifiability analysis shows that the proposed model is identifiable. Therefore, a parametric identification process is proposed to determine the value of the unknown parameters of the model. In this work we have used as a cost function a weighted sum of the root mean squared errors of the three temperatures. MATLAB mathematical software is used to solve the optimization problem. The main numerical results of the parametric identification process are included in Tables I and II. The adjustment of temperatures is shown in Figs. 2, 3 and 4.

B. Case II. Partial state measurement

In the case of measuring only one state variable the problem of parametric identification will be approached from another perspective. In this regard, it is intended to show the identifiability result obtained for the case B. To do this, we search two different parametric sets that give rise to the same input-output map for the measured variable. The numerical values of these parameters are listed in Table III. The simulation results of the model dynamics for the two sets of different parameters, θ_A and θ_B , are represented in Figs. 5, 6 and 7.

Conclusions

In this work we have presented an identifiability study of a heat transfer system for two different situations. In the first situation we have shown that the system is identifiable if all temperatures are measured. This ensures the existence of a unique parametric set for each possible dynamics of the system. In the second scenario, we show that the system is not identifiable if only the temperature T_1 is measured. A parametric fit can lead to a model that correctly reflects the measured temperature dynamics, but there is no guarantee that the estimated parameters make physical sense.

¹ Note that for algebraic simplicity, the inverses of resistances and capacitances are used, that is, $G_i = R_i^{-1}$ and $B_i = C_i^{-1}$.

Acknowledgments

This work was supported in part by the Ministerio de Economía y Competitividad, Gobierno de España – European Union, under project RTC-2017-5965-6, in part by the Gobierno de Aragón – European Union, under project DGA FSE T45 20R, and in part by Fundación Ibercaja -Universidad de Zaragoza, under project JIUZ-2021-TEC-05.

References

[1]. LUCHI, M. and LORENZINI, M. Dynamic model for convective heating of a wet brick during energy characterisation of domestic electric ovens. *Applied Thermal Engineering*. 2019, Elsevier.

[2]. LUCHI, M. and LORENZINI, M. Control-oriented low-order models for the transient analysis of a domestic electric oven in natural convective mode. *Applied Thermal Engineering*. 2019, Elsevier.

[3]. LJUNG, L. and GLAD, T. On global identifiability for arbitrary model parametrizations. *Automatica*. 1994, Elsevier.

[4]. GLOVER, K. and WILLEMS, J. Parametrizations of linear dynamical systems: Canonical forms and identifiability. *IEEE Transactions on Automatic Control*. 1974, IEEE.

[5]. WALTER, E. and PRONZATO, L. Identification of parametric models: from experimental data. *Springer*. 1997, Springer Verlag.

[6]. ANSTETT-COLLIN, F. and DENIS-VIDAL, L. and MILLÉRIOUX, G. A priori identifiability: An overview of definitions and approaches. *Annual Reviews in Control*. 2020, Elsevier.

[8]. DENIS-VIDAL, L. and JOLY-BLANCHARD, G. An easy to check criterion for (un) identifiability of uncontrolled systems and its applications. *IEEE Transactions on Automatic Control*. 2000, IEEE.

[9]. VADJA, S. and RABITZ, H. State Isomorphism approach to global identifiability of nonlinear systems. *IEEE Transactions on Automatic Control*. 1989, IEEE.

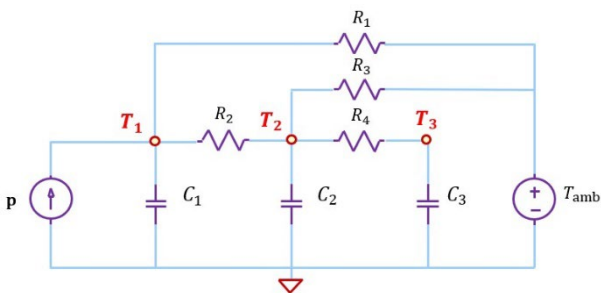


Fig. 1. Schematic representation of the lumped-parameter structure

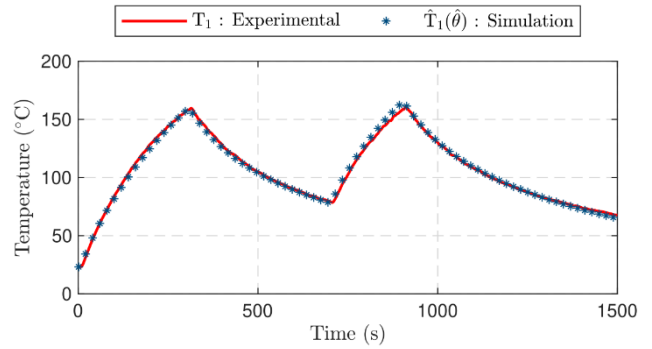


Fig. 2. Temporal evolution of temperature T_1

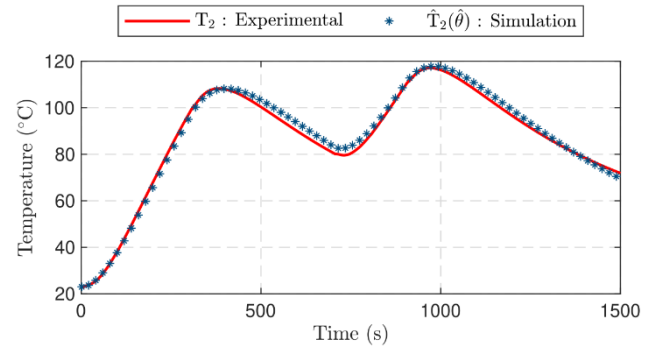


Fig. 3. Temporal evolution of temperature T_2

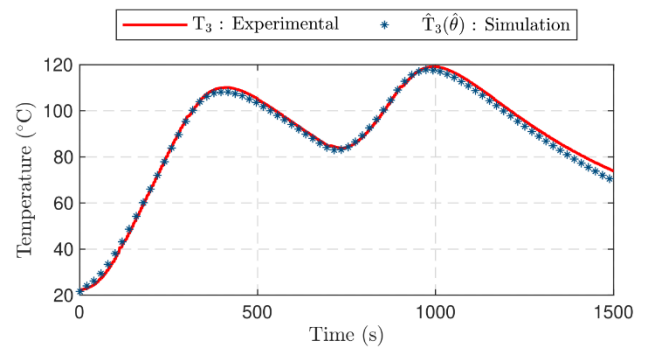


Fig. 4. Temporal evolution of temperature T_3

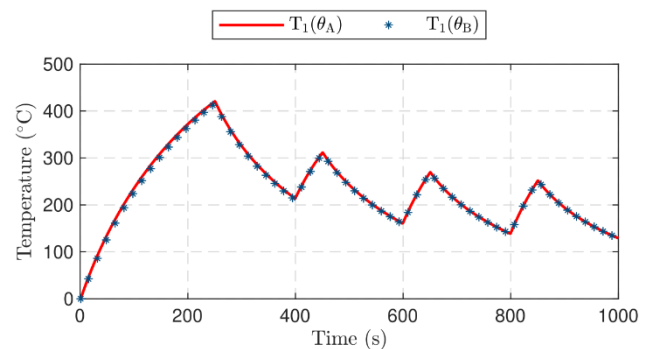


Fig. 5. Temporal evolution of the simulated temperature T_1 for the parametric sets θ_A and θ_B

Table III. Numerical Values of Parameter Sets θ_A and θ_B

Parameter	θ_A	θ_B	Units
R_1	1	-0.3008	K/W
R_2	0.5	0.1581	K/W
R_3	1	0.0442	K/W
R_4	0.1	0.01	K/W
C_1	300	300	J/K
C_2	150	1500	J/K
C_3	1	10	J/K

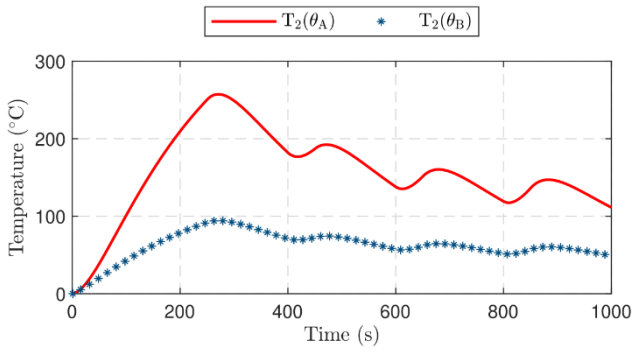
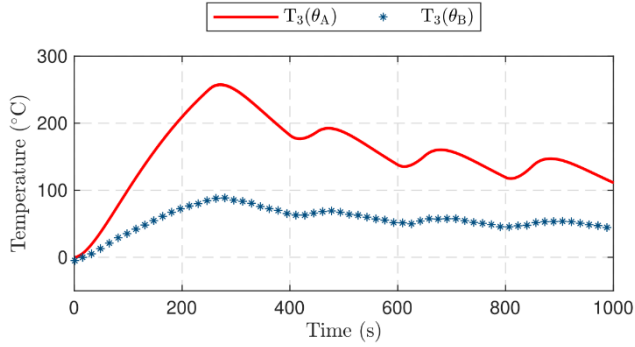
Fig. 6. Temporal evolution of the simulated temperature T_2 for the parametric sets θ_A and θ_B Fig. 7. Temporal evolution of the simulated temperature T_3 for the parametric sets θ_A and θ_B

Table I. Parameter Identification Results. Errors

Temperature	RMSE (°C)	T_{mean} (°C)	$\frac{\text{RMSE}}{T_{\text{mean}}}$ (%)
T_1	2.15	105.96	2.03
T_2	2.06	88.5	2.33
T_3	1.89	88.65	2.13

Table II. Parameter Identification Results. Parameter Set

Parameter	Initial value, θ_0	Optimum value, θ^*
R_1	1 K/W	1.2 K/W
R_2	1 K/W	0.835 K/W
R_3	1 K/W	4.35 K/W
R_4	1 K/W	0.1 K/W
C_1	350 J/K	380 J/K
C_2	180 J/K	213.4 J/K
C_3	0.9 J/K	0.995 J/K